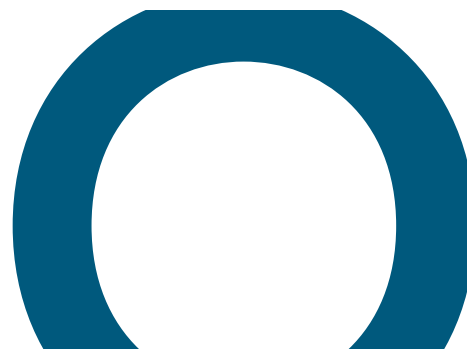


one2



Download
the full
manual here

Quick Start



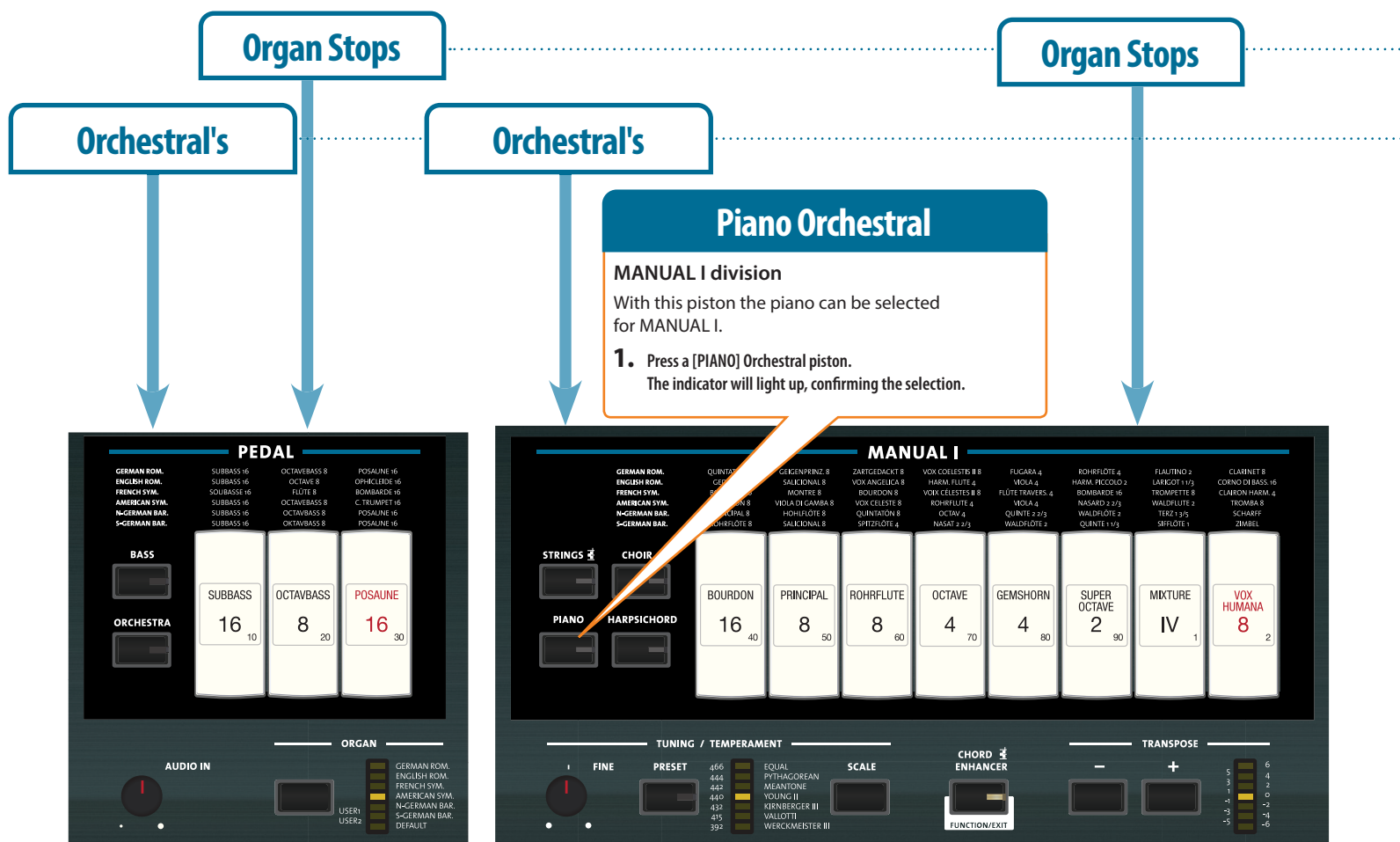
www.johannus.com

A MEMBER OF THE
Global Organ Group

JOHANNUS

Sound
of excellence

Quick Start



Orchestral's

For PEDAL, MANUAL I, MANUAL II divisions

Orchestral pistons, where one orchestral can be added to the organ section.

1. Press a piston to call, or recall an orchestral.
The indicator will light up when active. Other Orchestral pistons in the same group will be turned off during selection.

Registration - Organ Stops

PEDAL, MANUAL I, MANUAL II division

Organ Stop, to make a registration. Multiple Stops can be activated simultaneously.

1. Press the lower part of a "PEDAL," "MANUAL I," or "MANUAL II" stop to select the sound. The indicator will light up.
2. Press the upper part of a stop to cancel the sound.
The indicator of the stop will turn off, deactivating the selection.

Brilliance of the Sound

1. Turn the [TONE] knob to adjust the brilliance of the sound.
Turn right to brighten the tone. Turn left for a mellower sound.
The [VALUE/REV TYPE] indicator shows the brilliance value.

Volume of Each Section

1. Press and hold a piston for the section you want to adjust.
2. Turn the [TONE] knob to adjust the volume.
The [VALUE/REV TYPE] indicator shows the volume value.
3. Press the section piston again to exit edit mode.



Reverberation (REVERB)

The ONE2 offers 7 types of reverb.

1. Press the [TYPE] piston to select the reverb type.
The [VALUE/REV TYPE] indicator shows the room type.
2. Turn the [DEPTH] knob to adjust the reverb amount.

Demo Song

1. Simultaneously press the [P/II] piston and [SONG] pistons.
2. Press the [P/II] piston to start recording.
3. Play your song.
4. Press the [P/II] piston to stop recording.
5. Press the [P/II] piston to play song.
6. Press the [P/II] piston again to pause the song.
7. Press the [P/II] piston to return to the beginning of the song.

Record and Play Back a Song

Memories

The ONE2 features 8 memories per bank (pistons 1 - 8) and 4 banks (pistons M1 - M4), providing a total of 32 memory slots. Press the [0] pistons to cancel the settings of the currently selected memory and mute all organ and orchestral's.



Recall a Memory

1. Press the [M1/2/3/4] piston to select the memory bank.
The round piston lights up.
2. Press one of the [1]~[8] pistons to recall the memory.

Save a Memory

1. Press the [M1/2/3/4] piston to select the memory bank where you want to save.
The round piston lights up.
2. Press and hold the [1]~[8] piston to save the memory.

JOHANNUS

www.johannus.com

A MEMBER OF THE
Global Organ Group

Sound
of excellence